



DMR AXE Crank Fitment Guide



Tools Needed: 10-40Nm 3/8" Torque Wrench, 8mm Allen Key & Praxis M30 BB tool



Lay out your Crankset and BB ready for installation.

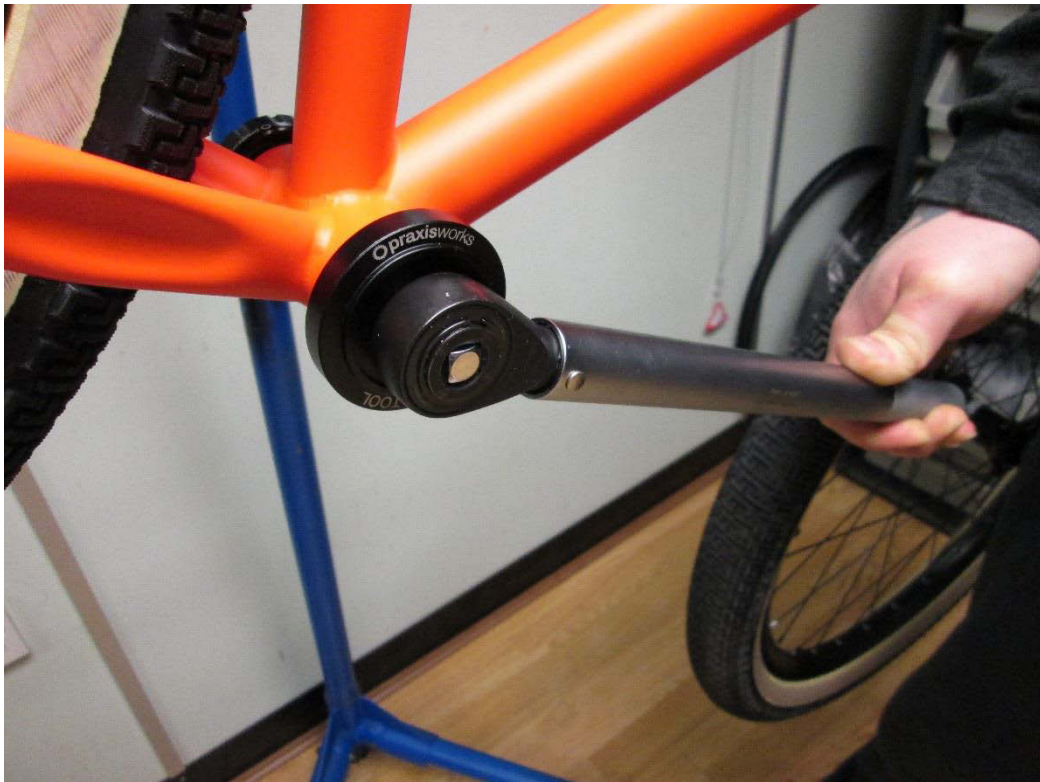


Apply a liberal amount of Anti-seize grease or Copper slip grease to the BB threads.

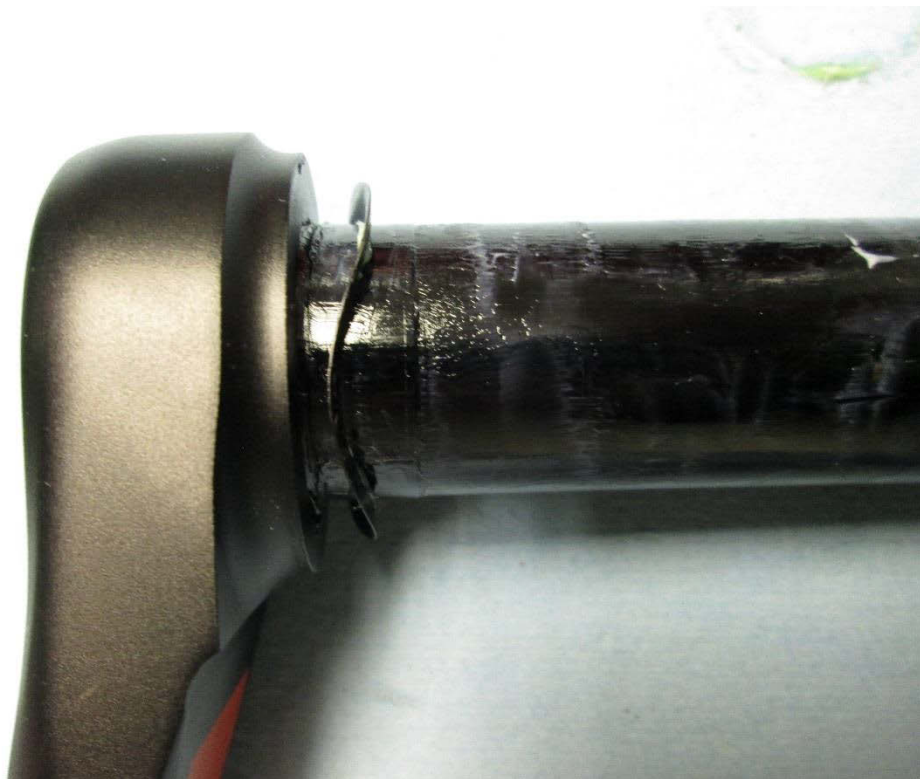


For a 68mm BB shell add 1 spacer to the LH cup and 2 spacers to the RH cup.

For a 73mm BB Shell add 1 spacer to the RH cup and nothing on the LH cup.

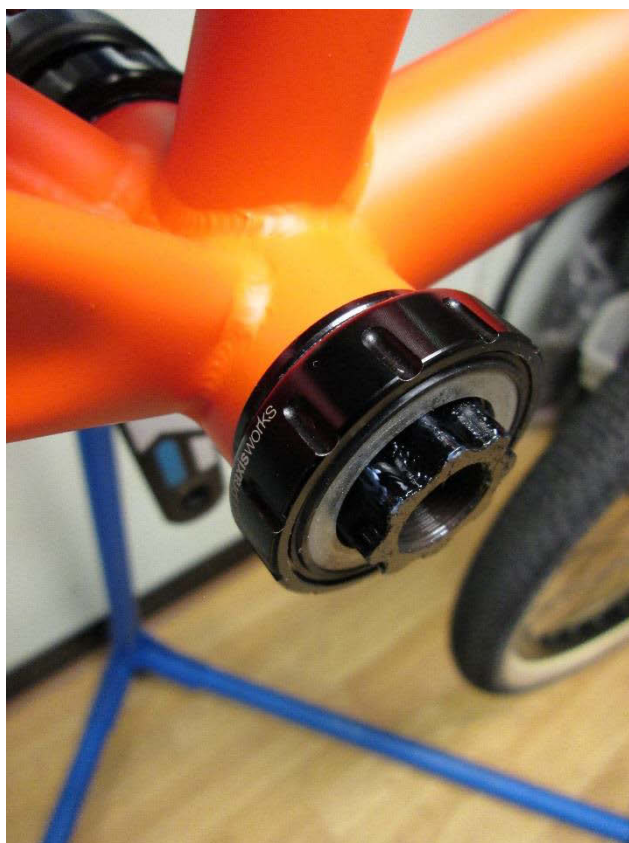


Torque the BB cups to 40Nm.



Slide the wavy washer over the axle all the way against the LH crank arm.

5th February 2015



Slide the crank through the BB until the axle meets resistance on the RH BB cup.



Thread the RH crank arm on, making sure you have aligned the splines correctly then torque the arm to 48-55Nm.



There you have it, a correctly installed DMR AXE Crank.

please check the torque of the fixing bolt after the first ride

Parts Used: DMR-C-AXE30-175-K – AXE Crank 175 68/73 bb

PR-68-0201 – Praxis M30 BB 68/73mm **Crankset comes with a bb. Replacement use only*

PR-M30-BB-TOOL – Praxis M30 BB Tool